

MONTHLY MEMBERSHIP PROGRESS REPORT

District 318 D

Results as of: 3/31/2020

GMT:

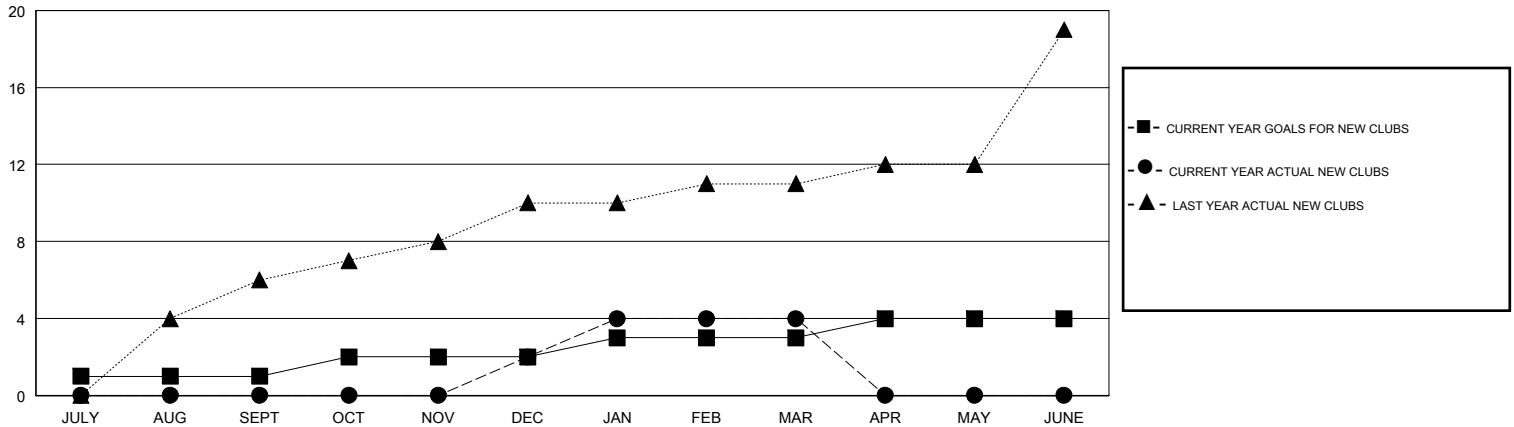
LOCATION INDIA

GMT CA

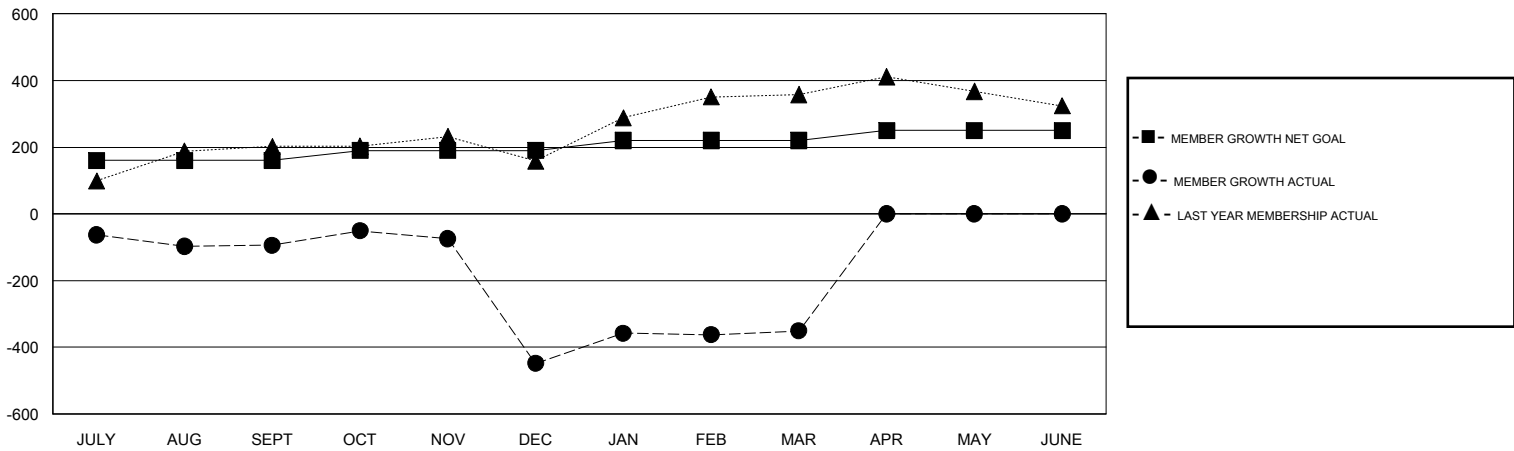
Clubs			
RESULTS FOR 2019-2020			
QUARTER	NEW CLUB GOAL	NEW CLUBS	DROPPED CLUBS
JULY/AUG/SEPT	1	0	0
OCT/NOV/DEC	1	2	14
JAN/FEB/MAR	1	2	1
APR/MAY/JUNE	1	0	0

Members			
RESULTS FOR 2019-2020			
QUARTER	MEMBER GROWTH NET GOAL	MEMBER GROWTH ACTUAL	DROPPED MEMBERS ACTUAL (including transfers)
JULY/AUG/SEPT	160	74	164
OCT/NOV/DEC	30	167	518
JAN/FEB/MAR	30	246	92
APR/MAY/JUNE	30	0	0

GOALS AND ACTUAL NEW CLUBS CUMULATIVE



GOALS AND ACTUAL MEMBERS CUMULATIVE



DROPPED CLUBS: 15	100 CLUBS OF 164 ADDED 1 OR MORE NEW MEMBERS	<u>GENDER DISTRIBUTION</u>
DROPPED MEMBERS	CLICK HERE FOR CUMULATIVE MEMBERSHIP DATA	MALE 4,678 (82.29%)
DECEASED 16		FEMALE 1,007 (17.71%)
CLUB CANCELLED 291		TOTAL FAMILY UNIT MEMBERS 1,684
OTHER 467		FAMILY MEMBERS PAYING HALF DUES 904
TOTAL 774		